

art Market

CONTEMPORARY ART / DESIGN / AUCTIONS / EXHIBITIONS / ART FAIRS

**& ARMIDA
RINALDO**

An Exclusive Interview
With **ERIC UHLIR**

WHITNEY

**WANDA
GÁG'S
WORLD**

VIANNEY
■ VOYAGES

**ALEXANDREA
NICHOLAS-
JENNINGS**

*The Depths
Of The Emotional*
Landscape
MARCELA
JARDÓN

**MUBERRA
KARAMANOGLU**




La Biennale di Venezia

Stranieri Ovunque

**FOREIGNERS
EVERYWHERE**

La Biennale di Venezia
60th International Art Exhibition





*The Depths
Of The Emotional*
Landscape

MARCELA JARDÓN

Jardón meticulously approaches her art, emphasizing the details. She starts by conceptualizing her ideas and selects the best medium to bring her vision to life. Her paintings have a velvety texture and are highly tactile, which can create a sense of visual unrest. Her work explores the concepts of sadness, war, and death, inspired by the ongoing armed conflict in Ukraine and Russia's invasion of Ukraine. She takes a thoughtful approach to her art, preferring to think through her paintings

and externalize her subjectivity rather than explosively unleashing her creativity. She is not concerned with attempting to evoke intense emotions spontaneously. Her paintings feel like velvet and are not smooth to the touch. It can be challenging to identify a well-defined horizon when viewing her work. By incorporating symbolism and color, Jardón's work alludes to a problem affecting the world. Her approach is refined, and she has continued experimenting with different techniques.



The Depths Of The Emotional Landscape

Landscape 1346
Acrylic on canvas, 100x100 cm.
Marcela Jardón © All rights reserved.

MARCELA JARDÓN

Marcela Jardón, was born in Buenos Aires, 1964. Known for her abstract art, she is a versatile artist who works with different art forms, including painting, photography, object art, installation art, and audiovisual media, all with an abstract

approach. Jardón focuses on ideas, which she later expresses through her art. She creates her artwork by combining objects, photographs, and paintings, treating all of them as abstract forms. Her recent works are mainly focused on paintings. According to Jardón, drawing is the best way to express the idea

of space. She believes it moves from the abstract non-existence sphere to the concrete existence-concretion sphere. This philosophy helps to understand her paintings, which aim to concretize a subjective artistic reality, and her paintings are significant because she



Landscape 5496,
Acrylic on canvas, 150x150 cm.
Marcela Jardón © All rights reserved.

shares her thought process and expresses her subjectivity through her art. Her aim is not only to create aesthetic pleasure for the viewer but also to evoke emotions. She uses a single muted color that rejects visible reality and representation without constructing space to achieve this. Art enables people to express themselves and recreate their thoughts and emotions.

She believes that experience is a collective phenomenon that goes beyond the individual. Specific experiences shared by many people over time and in different parts of the world can become embedded in our genetic memory. This enables us to grasp the essence of what a particular landscape represents, regardless of its content, such as a mountain or snowscape, desert or seascape.

The Depths Of The Emotional Landscape

Right Top: Landscape 5500
Acrylic on canvas. 150x150 cm.
Marcela Jardón © All rights
reserved.

Right Bottom: Landscape 5452
Acrylic on canvas. 80x80 cm.
Marcela Jardón © All rights
reserved.

Right Page: Landscape 4799
Acrylic on canvas. 80x80 cm.
Marcela Jardón © All rights
reserved.

Jardón's most recent series of paintings is based on landscapes, a recurring theme in her work. However, she does not approach landscape art in the traditional sense. She does not imitate or recreate any previously seen landscape. Her landscapes are not based on personal experience, so she does not feel she needs to have witnessed them firsthand to create her art.

Jardón uses organic tempera paint in her artwork to enhance her technique and reduce the use of acrylics. Acrylic paint is made from synthetic materials and has an industrial origin, which reminds the artist of the time when plastics were overused and natural resources were depleted.

Jardón finds tempera paint effective in her black paintings and is researching how to use it in more colorful pieces. She is fond of the contrast between the intense, bright colors and the delicate, grainy qualities of tempera.



ACCORDING TO JARDÓN, DRAWING IS THE BEST WAY TO EXPRESS THE IDEA OF SPACE. SHE BELIEVES IT MOVES FROM THE ABSTRACT NON-EXISTENCE SPHERE TO THE CONCRETE EXISTENCE-CONCRETION SPHERE. THIS PHILOSOPHY HELPS TO UNDERSTAND HER PAINTINGS, WHICH AIM TO CONCRETIZE A SUBJECTIVE ARTISTIC REALITY. HER PAINTINGS ARE SIGNIFICANT BECAUSE SHE SHARES HER THOUGHT PROCESS AND EXPRESSES HER SUBJECTIVITY THROUGH HER ART.



MARCELA
JARDÓN



Top Left: Landscape 5994
Acrylic on canvas. 150x150 cm.
Marcela Jardón © All rights reserved.

Left Bottom: Landscape 5431
Acrylic on canvas. 100x100 cm.
Marcela Jardón © All rights reserved.

Top Right: Landscape 5422
Acrylic on canvas. 100x100 cm.
Marcela Jardón © All rights reserved.

Right Bottom: Landscape 5434
Acrylic on canvas. 100x100 cm.
Marcela Jardón © All rights reserved.

Top: Marcela Jardón with
the work Landscape 5500
Acrylic on canvas.
150x150 cm.
© All rights reserved.

Marcela Jardón (Buenos Aires, Argentina, 1964) is a multidisciplinary artist who trained at the National School of Fine Arts (National University of the Arts) in Argentina. She obtained her degree in 1988 and began her exhibition career. Since 2000, she has lived and worked in Barcelona. Her works have been exhibited and published in America, Europe, and Asia, in various Art Fairs (recently in Germany Art Karlsruhe, C.A.R. Ruhr, in Madrid estampa, Art Madrid, Italia Arte in Nuvola) and in institutions such as the University of Valencia, Sociedad Argentina of Plastic Artists of Buenos Aires, the Sydney Opera House, Australia, the Kanazawa Art Center Citizen, Japan, the University of Alicante Museum, the Bangkok.



*The Depths
Of The Emotional*
Landscape



*The Depths
Of The Emotional*
Landscape

Top: Landscape 6112
Acrylic on canvas. 150x150 cm.
Marcela Jardón © All rights reserved.

ART ENABLES PEOPLE TO EXPRESS THEMSELVES AND RECREATE THEIR THOUGHTS AND EMOTIONS.

MARCELA JARDÓN

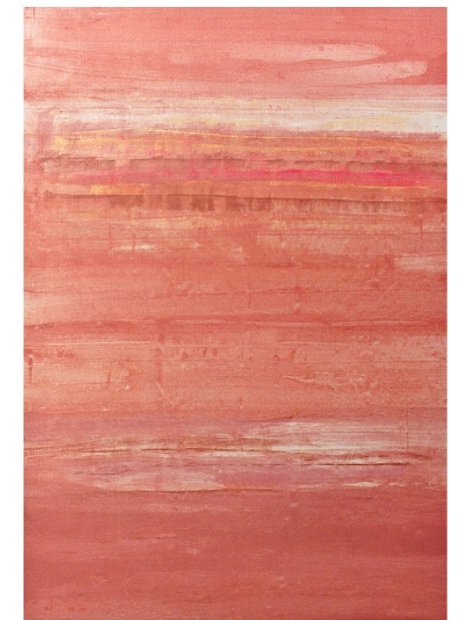
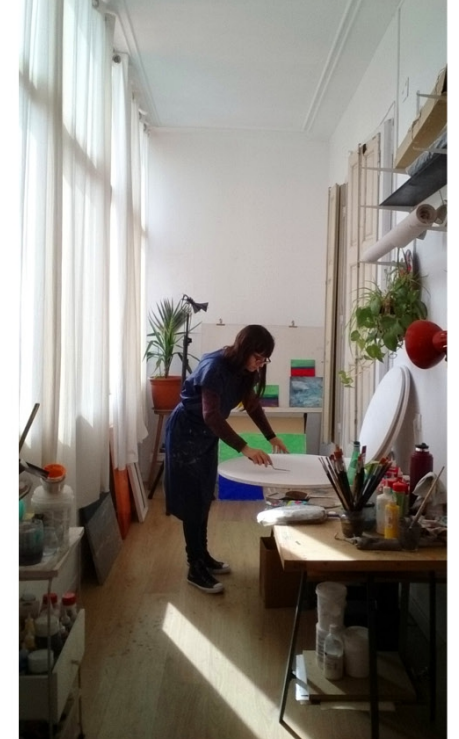
Top Right: Landscape 5729
Acrylic on canvas. 130x89 cm.
Marcela Jardón © All rights reserved.

Right Bottom: Landscape 5733
Acrylic on canvas. 130x89 cm.
Marcela Jardón © All rights reserved.



In addition, Jardón's work has been exhibited at the Regional Office of The Rockefeller Foundation, the Center for Contemporary Culture of Barcelona, the Department of Expressions Artistic of the University of Panama, the Argentine Social Museum of Buenos Aires, the Provincial Museum of Quilmes in Argentina, the Museum of Modern Art of Buenos Aires, the Cabildo de Montevideo Historical Museum and Archive in Uruguay, the Aveiro Museum of Portugal, the Museu de

Reus, the La Neomudéjar Museum in Madrid, the Santa Mónica Art Center in Barcelona, the Reial Cercle Artístic in Barcelona, at the Spectrum Fair Miami (2018), the LA Art Show, Fair (2019) and in several galleries. Jardón's work is in private and public collections in Argentina, Spain, Canada, Panama, Australia, Italy, Germany, France, the United Kingdom, Japan, Sweden, the USA, Mexico, the Netherlands, and Belgium.



*The Depths
Of The Emotional*
Landscape



Landscape 5727
Acrylic on canvas. 130x89 cm.
Marcela Jardón © All rights reserved.



Top Left: Landscape 6073
Acrylic on canvas. 130x89 cm.
Marcela Jardón © All rights reserved.

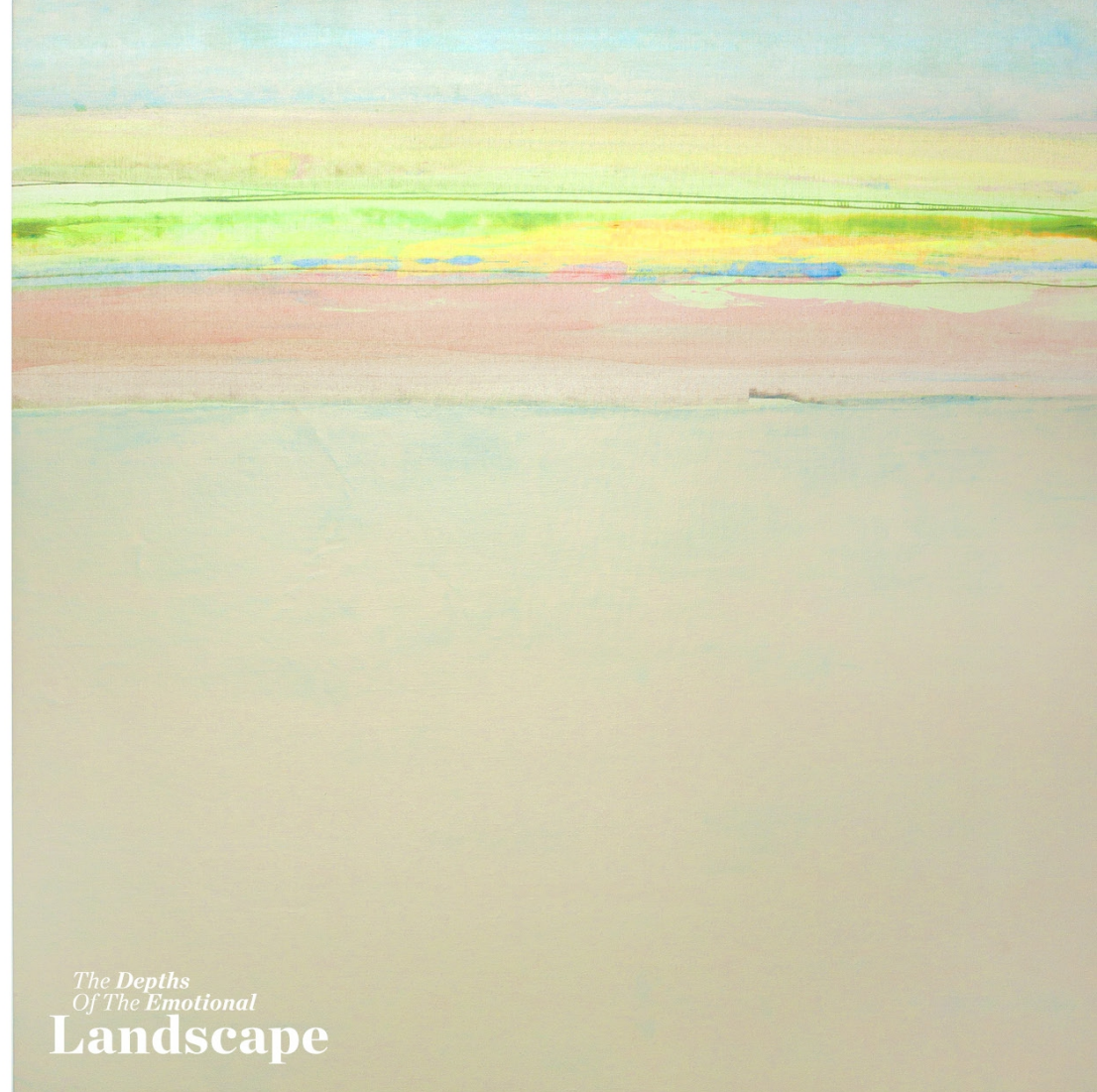


Top Right: Landscape 6071
Acrylic on canvas. 130x89 cm.
Marcela Jardón © All rights reserved.



Marcela Jardón at the studio © All rights reserved.

MARCELA JARDÓN



*The Depths
Of The Emotional*
Landscape

Left Page: Landscape 5515
Acrylic on canvas. 100x100 cm.
Marcela Jardón © All rights reserved.

Top: Landscape 5711
Acrylic on canvas. 100x100 cm.
Marcela Jardón © All rights reserved.

JARDÓN DOES NOT APPROACH LANDSCAPE ART IN THE TRADITIONAL SENSE. SHE DOES NOT IMITATE OR RECREATE ANY PREVIOUSLY SEEN LANDSCAPE. **HER LANDSCAPES ARE NOT BASED ON PERSONAL EXPERIENCE, SO SHE DOES NOT FEEL SHE NEEDS TO HAVE WITNESSED THEM FIRSTHAND TO CREATE HER ART.**

MARCELA JARDÓN

WEBSITE: WWW.MARCELAJARDON.NET

INSTAGRAM: [@MARCELAJARDON.STUDIO](https://www.instagram.com/MARCELAJARDON.STUDIO)